

Afternoon Lullaby

Adam Satorius

$\text{♩} = 65$

Guitar 1

Guitar 2

Guitar 3

Guitar 4

mf



5

Gtr.

Gtr.

Gtr.

Gtr.

mp

mf



9

Gtr. *mp*

Gtr. *mp*

Gtr. *mp*

Gtr. *mf*

Detailed description: This system contains four staves of guitar music for measures 9 through 12. The first staff is a whole rest. The second staff has a melody with fingering 1-2-1-2 and 1-2-1-2. The third staff has a rhythmic accompaniment with fingering 3-4-3-4 and 3-4-3-4. The fourth staff has a bass line. Dynamics include *mp* and *mf*.

A

13 *cantabile*

Gtr. *f*

Gtr. *mp*

Gtr. *mp*

Gtr. *mf*

Detailed description: This system contains four staves of guitar music for measures 13 through 16. Measure 13 is marked with a box 'A' and 'cantabile'. The first staff has a melody with fingering 1-2-4-1-2-0 and dynamic *f*. The second staff has a melody with dynamic *mp*. The third staff has a rhythmic accompaniment with dynamic *mp*. The fourth staff has a bass line with dynamic *mf*.

17

Gtr. *mp*

Gtr. *mp*

Gtr. *mf*

B

21

Gtr. *f* *p*

Gtr. *f* *p*

Gtr. *f* *p*

Gtr. *f*

25

Four guitar staves (Gtr.) with musical notation for measures 25-28. Each staff is labeled 'Gtr.' and contains a melodic line. Dynamics *f* and *p* are indicated. The notation includes quarter notes, eighth notes, and half notes with slurs and accents.



29

Four guitar staves (Gtr.) with musical notation for measure 29. Each staff is labeled 'Gtr.' and contains a whole note chord. The notation includes a whole note chord with a fermata above it.

Afternoon Lullaby

Adam Satorius

Guitar 1

A

$\text{♩} = 65$

12

cantabile

f

17

To Coda ϕ

21

B

f *p*

25

f *p*

D.C. al Coda ϕ

29

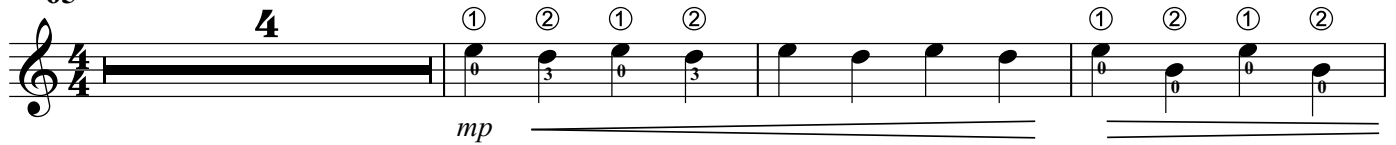
Afternoon Lullaby

Guitar 2

Adam Satorius

$\text{♩} = 65$

4



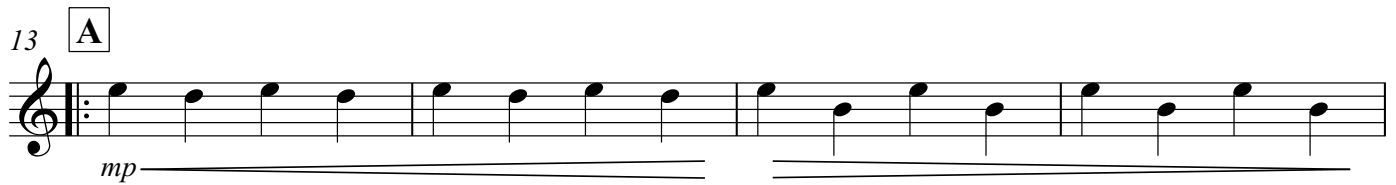
mp

8



mp

13 **A**



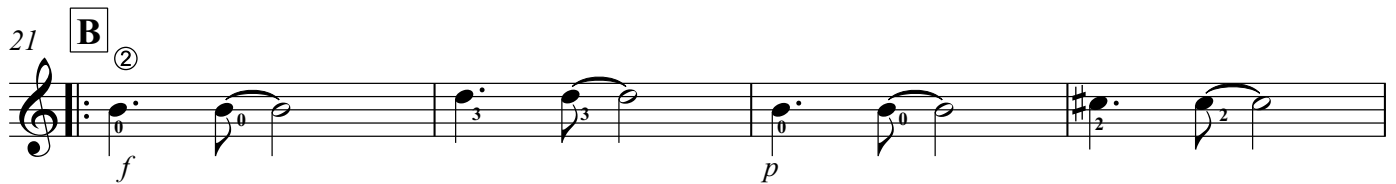
mp

17 **To Coda** ϕ



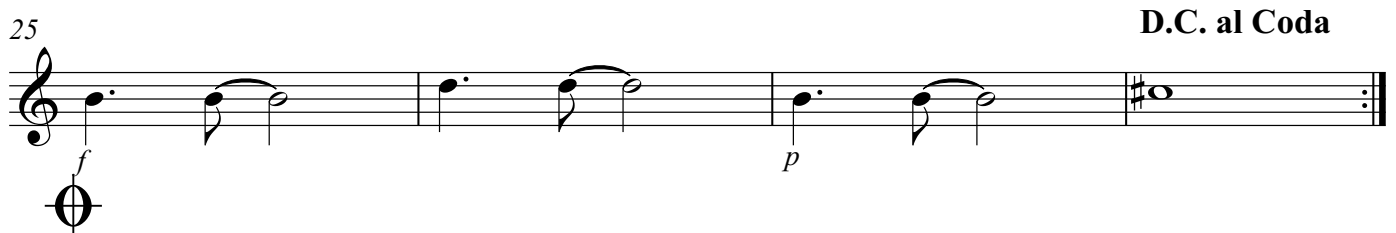
mp

21 **B** ②



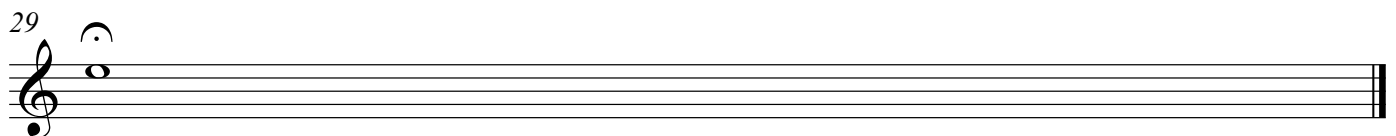
f *p*

25 **D.C. al Coda**



f *p*

29





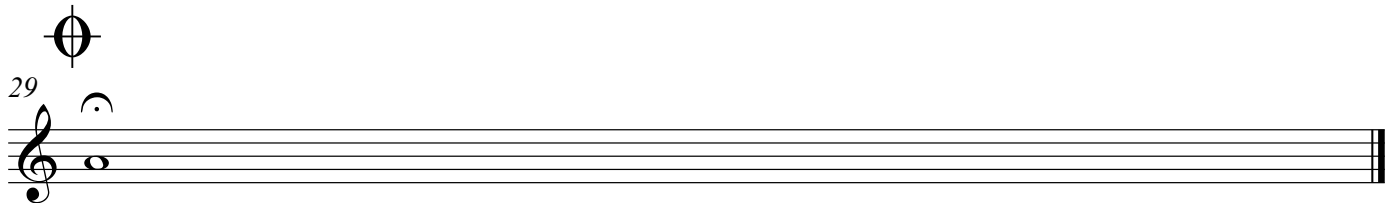
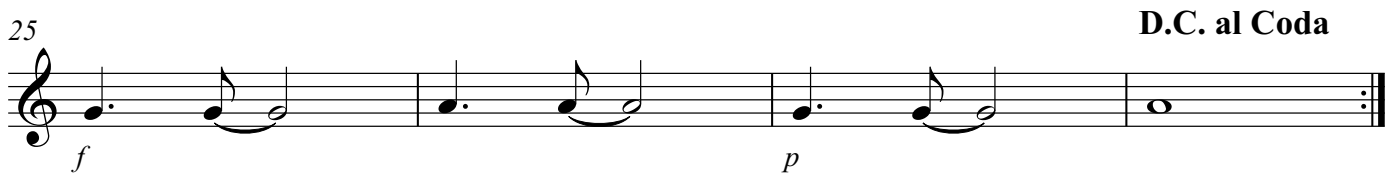
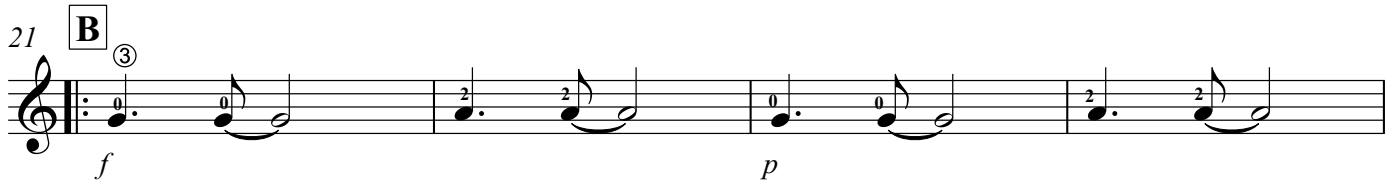
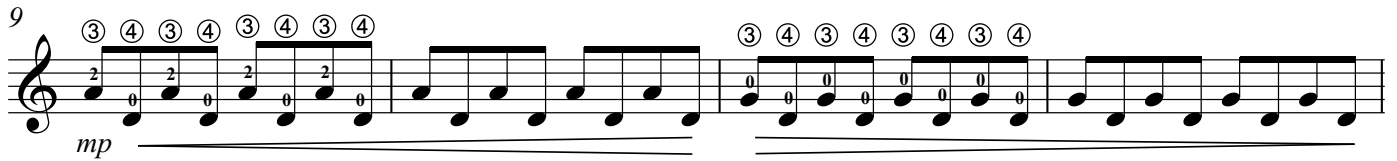
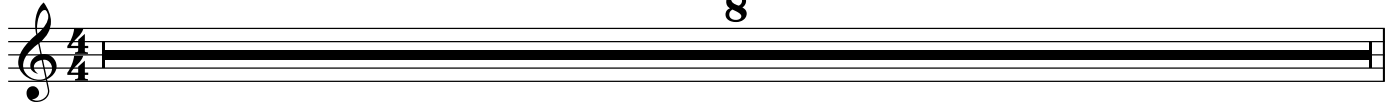
Afternoon Lullaby

Guitar 3

Adam Satorius

$\text{♩} = 65$

8



Afternoon Lullaby

Guitar 4

Adam Satorius

$\text{♩} = 65$

④

mf

⑥

3

5

mf

9

mf

13 **A**

mf

17 **To Coda** \oplus

mf

21 **B**

⑥

⑤

0 *f* 0 *f* \sharp_2 2 *f* 3 *p* 3 *p* 0 *f* 0 *f*

25 **D.C. al Coda**

f *p*

29

